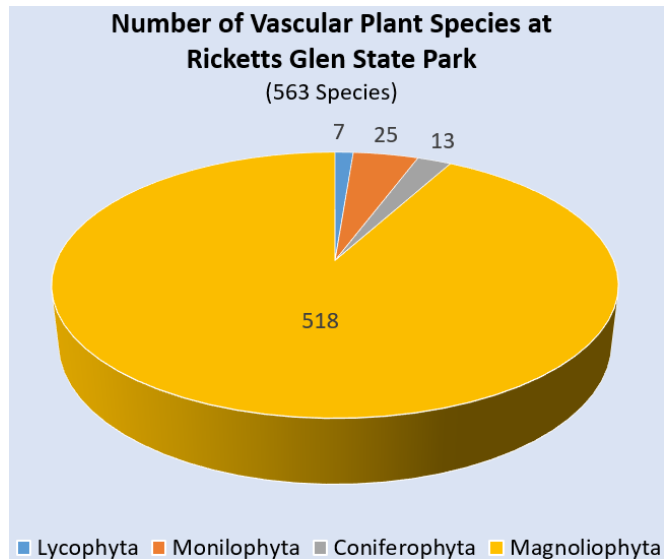


**FLORA OF RICKETTS GLEN PROJECT**  
George P. Chamuris, PhD, Professor Emeritus  
Department of Biology  
Commonwealth University of PA  
5 June 2025

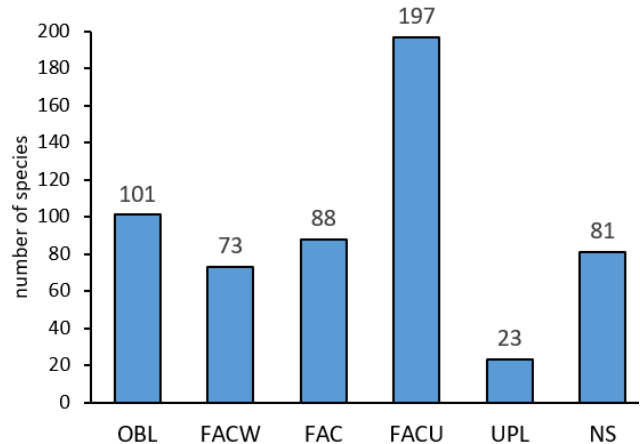
**26 Families are Represented by 5 or More Species**  
**11 Families are Represented by 10 or More Species**

Family		# species
Asteraceae	Aster Family	76
Cyperaceae	Sedge Family	42
Rosaceae	Rose Family	40
Fabaceae	Pea Family	19
Ericaceae	Heath Family	17
Ranunculaceae	Buttercup Family	17
Violaceae	Violet Family	15
Lamiaceae	Mint Family	13
Polygonaceae	Smartweed Family	13
Plantaginaceae	Plantain Family	12
Pinaceae	Pine Family	11
Brassicaceae	Mustard Family	9
Hypericaceae	St. John's-Wort Family	9
Rubiaceae	Madder Family	9
Salicaceae	Willow Family	9
Fagaceae	Beech Family	8
Juncaceae	Rush Family	8
Onagraceae	Evening-Primrose Family	8
Liliaceae	Lily Family	7
Orchidaceae	Orchid Family	7
Viburnaceae	Viburnum Family	7
Apiaceae	Parsely Family	6
Betulaceae	Birch Family	6
Lycopodiaceae	Clubmoss Family	6
Apocynaceae	Dogbane Family	5
Orobanchaceae	Broom-Rape Family	5
79 families are represented by 1 - 4 species		
Total: 301 genera in 106 families		

Also included: 17 species of Poaceae.



**Wetland Indicator Status for Ricketts Glen Vascular Plants**



		probability of occurring in wetlands
OBL	obligate wetland species	99%
FACW	facultative wetland species	67 – 99%
FAC	facultative species	34 – 66%
FACU	facultative upland species	1 – 33%
UPL	upland species	1%
NS	no wetland status	